

# MORELLO QUARTER PHASE II

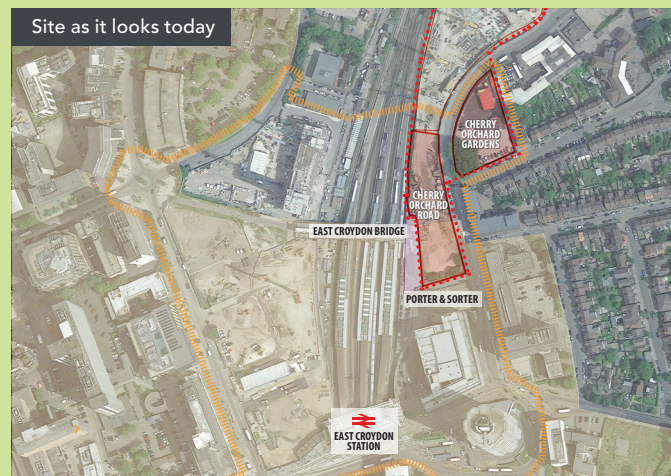
MORELLO QUARTER  
PHASE II

## COME & JOIN US TO DISCUSS NEW CHERRY ORCHARD ROAD PROPOSALS

### WHERE IS MORELLO PHASE II?

It is next to East Croydon train station on Cherry Orchard Road, adjacent to the development which is currently being constructed on the site of the former (Galaxy House) Bank of America building.

The site received planning consent for a 54 storey tower in 2011.



### WHAT IS NOW BEING PROPOSED?

- Approximately 440 new homes
- Affordable housing - shared ownership to help local people get on the property ladder
- **Completion of an east/west pedestrian link from Central Croydon, through east Croydon Train Station into Addiscombe and beyond**
- New pedestrian entrance into East Croydon Station via a high quality landscaped public space, new stairs and a temporary link structure connecting to the existing station bridge
- Café culture retail on the ground floor, creating a sense of arrival at the new station entrance
- Multi-functional amenity space which will be accessible to Addiscombe residents
- Basement parking to ensure clutter-free landscaped public spaces throughout Morello Quarter
- Gateway buildings of exceptional design quality

### WHAT HAPPENED TO THE ORIGINAL PLANS?

Menta was granted planning consent in 2011 for a 54 storey residential tower, hotel, offices, retail and community uses on both sides of Cherry Orchard Road, including the site of the 'Porter and Sorter' public house.

Since then, a change in circumstances of the then funder RBS has led to Menta securing a different development partner and bringing forward a new scheme with Redrow.

[www.morello2-croydon.co.uk](http://www.morello2-croydon.co.uk)

  
**MENTA**  
REGENERATION

 **REDROW**  
A BETTER WAY TO LIVE

# INVITATION TO MORELLO COMMUNITY FORUM EVENING:

**Date:** Wednesday 26 April 2017

**Time:** 7.00pm-8.30pm

**Venue:** Ark Oval Primary Academy, 98 Cherry Orchard Rd,  
Croydon CR0 6BA

## ABOUT THE COMMUNITY FORUM

We will be going out to public consultation on the proposals with community exhibitions in May this year. In advance of that, we would like to talk through our plans with local businesses, residents' representatives, local interest groups or other community bodies that take an active interest in the area. We would encourage you all to join us in discussing regeneration proposals for this very important site.



Map data ©2017 Google, Croydon

## CONTACT US

We would request that you register your intended attendance at the Community Forum by 17 April to help us with event preparation. Please contact GL Hearn at [Morello2@glhearn.com](mailto:Morello2@glhearn.com) or call Tom Byrne/Alphie Burgess on 0344 225 0003 to register your interest.

[www.morello2-croydon.co.uk](http://www.morello2-croydon.co.uk)